



16 Port POE Switch

ZEB **16PG2UG1UF-300**



## User Manual

[www.zebronics.com](http://www.zebronics.com)

Hello Zeebee! Please read the following instructions carefully in order to use the product optimally.

**Note:**

- Do not expose the device to steam or dust.
- Do not install the device at position exposed to sunlight or in high temperature.
- Do not directly expose the device to humid environment.
- The device must be installed on solid and flat surface.
- Do not block air vent of the device or ventilation around the device.
- Do not place any object on the sides of the device to avoid ventilation issue.
- Do not disassemble the device.

**Features:**

- 16 Self Adaptive PoE Ports
- Dual Gigabit Uplink Ports
- 250m Extended Transmission (Max.)
- 300W Output (Max.)
- Upto 30W Per Port
- Full Duplex
- High Data Rate
- Wide Compatibility
- Dynamic Power Control
- Short Circuit Protection
- Anti Interference Capability
- Lightning Protection
- SFP Port

- AI WatchDog
- Mounting Kit

### **Specifications:**

Connector Type : 16 Ports 10/100M/1000M  
PoE + 2 Ports 1000M  
Ethernet Uplink +  
1000M SFP Port

Network Protocols : IEEE802.3, IEEE802.3u,  
IEEE802.3x, IEEE802.3ab

#### PoE Parameters

PoE Standard : IEEE802.3af (15.4W) &  
IEEE802.3at (30W)

PoE Compatibility : IEEE802.3af/at Self Adaptive  
Power Pin

Assignment : MODE A [1/2(+), 3/6(-)]

#### Network Media

10BASE-T : Cat 6 UTP (= < 250 Meters)

100BASE-TX : Cat6 UTP (= < 100 Meters)

1000BASE-TX : Cat6 UTP (= < 100 Meters)

#### Power Supply

Input : AC100-240V, 50/60Hz

Output : 30W Per Port

Power Budget : 300W

#### Performance Specification

Bandwidth : 38Gbps

MAC : 8K

Packet Buffer

Memory : 4 Mbits

10M Packet

Forwarding Rate : 14880 pps/port

100M Packet

Forwarding Rate : 148800 pps/port

1000M Packet

Forwarding Rate : 1488000pps/port

LED Indicator

Power (Red) : Lit - Powered,  
Unlit - No Power

Ethernet (Green) : Flash - Data Transmit,  
Unlit - Disconnect

Working Environment

Operating

Temperature : 10°C ~ 55°C

Storage

Temperature : 20°C ~ 70°C

Operating

Humidity : Max 20 ~ 95%  
(Non-Condensation)

Storage

Humidity : Max 20 ~ 95%  
(Non-Condensation)

Physical Parameter

Product Dimension

(W x D x H) : 31 x 18.5 x 4.5 cm

Net. Weight : 1.71 Kg

Transmission Distance

Data Transmission

Distance : 250m (Max.)

PoE distance upto 250 meters with 10M via Cat.6

Port Surge Protection: 6KV

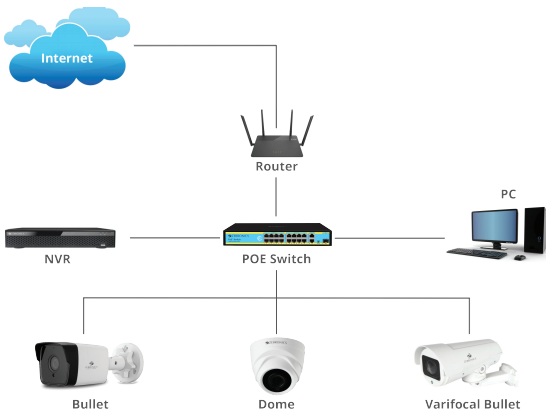
Forwarding Mode : Store and forward

## Package Contents:

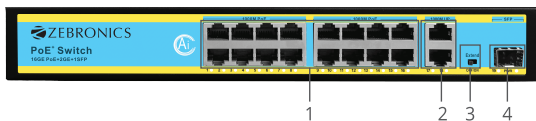
Ethernet Switch : 1U  
Power Cord : 1U  
Mounting Kit : 1U  
QR Code Guide : 1U

## Typical Application & connection setup :

The typical application of the device is shown below.



## Front Panel



No.	Name	Description
1	16 Ports 10/100/1000M PoE	16 x 10/100/1000 Mbps self-adaptive RJ45 port
2	2 Ports 1000M Ethernet Uplink	2 x 1000 Mbps self-adaptive uplink port
3	Extend Switch	Transmission mode selection (100 meter POE, Extend 250 meter POE VLAN mode)
4	SFP Port	1 x 1000M SFP Port

## Back Panel



No.	Name	Description
1	Power port	Supports AC100-240V, 50/60Hz
2	Ground Terminal	Grounding terminal

ISO 9001:2015 Certified Company  
[www.zebronics.com](http://www.zebronics.com)